



WELCOME TO  
**ITAC**



**Leadership &  
Experience**



## Business Partners

**Honeywell**



**SOTI**

Established in **2002**.  
Providing advanced IT  
solutions for our partners  
Worldwide.

Extensive experience in  
providing **mobile**  
**solutions**.

## Our Locations



Jordan



Palestine



Iraq



Saudi



Yemen

Oracle **Gold** and **ISV** Partner.  
**Honeywell / Intermec**  
**Platinum** partner.  
SOTI Partner

**Authorized** service  
center for **Honeywell/**  
**Intermec** in Jordan.

The background features a solid green area on the right side, separated from the white area on the left by a diagonal line that runs from the top-left towards the bottom-right. The text is positioned in the white area.

**OUR**  
**Products &**  
**Solutions**



The state-of-the-art mobile powered System to automate and cover the Sales Cycle form all aspects.

## Benefits

- Rich features for each operation
- Easy to use and learn
- Cross-platform support (Android, iOS and Windows)
- 4G, 3G, GPRS and offline supported
- Online-offline GPS Tracking
- NFC Supported
- Detailed reports and analysis
- The ability to integrate with any other service or platform

## Components & Features

- Direct Sales Delivery (Cash Van)
- Order Management (Order Taking and Order Delivery)
- Management Tools (Products, Customers, Promotions...etc)
- Common Components (Maps, Licenses, Docs...etc)



# itacware

itacware is a modern, fully automated and easy to use ERP System to manage your business (customers, invoices, orders, products, stocks, agenda...).

## Benefits

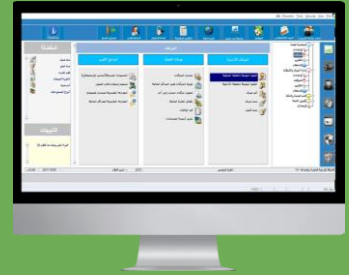
- Web Enabled
- Built-in CRM
- Built-in Workflow Engine
- Reminders & To Do List Engine
- Integrated with Mail System
- Analytical Dash Boards
- Audit Trail

## Components & Features

- Financial Management
- Supply Chain
- HR Management
- Manufacturing Management
- Vertical Solution



ORACLE®



# MedicalReps

ITAC MedicalRep Is a cutting-edge system used to organize Medical Representatives visits to the doctor.

## Benefits

- Increase product awareness.
- Manage Medical Rep. daily activities
- Increase the quality of service
- Monitor the market performance
- Tighten and improve relations with doctors
- Field Activities Online- Offline Tracking.
- Tracking online and offline maps.

## Components & Features

- Back office Application.
- Mobile Application.
- Tracking Maps.
- Reporting and Analysis component



## Inventory & Production Operations



Easy-to-use automation system to manage inventory & production Operations using the power technology of Barcodes.

### Benefits

- Eliminate the paper work activities.
- Reduce the human-error factor
- Online on-hand balance.
- Easy to configure and use.
- Improve the daily activities productivity.
- Track and report production process.

### Components & Features

- Raw materials warehouse operations.
- Finished goods warehouse operations.
- Production Tracking.
- Stock Counting.



# Honeywell





# FiXed Assets

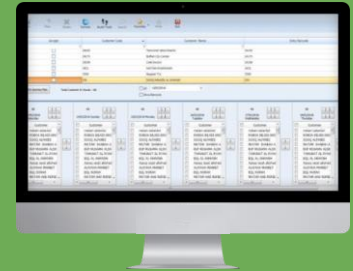
The leading asset lifecycle management software enables you to create POs, schedule services and manage maintenance effortlessly.

## Benefits

- Eliminate the paper work activities.
- Reduce the human-error factor
- Online on-hand balance.
- Easy to configure and use.
- Improve the daily activities productivity.
- Track and report production process.

## Components & Features

- Raw materials warehouse operations.
- Finished goods warehouse operations.
- Production Tracking.
- Stock Counting.



# GRP

Government Resources Planning

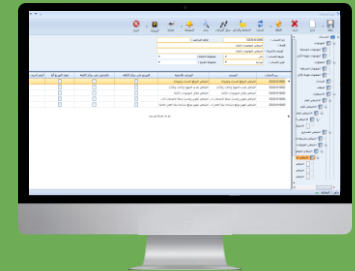
The robust, flagship ERP system that forms a complete business solution to enables governmental entities to automate their daily operations

## Benefits

- Bilingual Graphical User Interface
- Powerful HMI structure and design
- Multi-company
- Multi-Cost Center
- Multi-Store
- Multi-User
- Multi-Currency
- Integration with Microsoft Office application and other applications

## Components & Features

- Financial System
- General Ledger
- Cash and Check management System
- Inventory Management System
- Payroll System
- Human Resources Management





Successful  
**Vertical**  
solutions

# Custom Mobile Apps



Invoice  
Delivery



Complaints &  
Suggestion App



Survey & Data  
Collection App



Customer Order  
& Tracking App



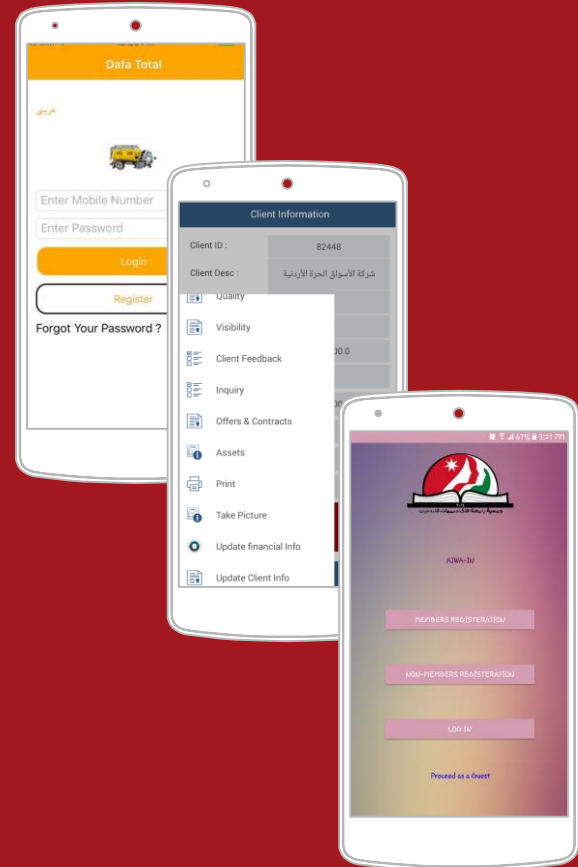
Money  
Collection App



Order Delivery  
App



Field Service  
Management  
App



# Meter Reading Solution

## Field Services Applications

- Door step billing activities.

## Benefits

- Increase employee's productivity
- Manage issuing invoices process
- Control and reduced delivery time
- Easy access to data
- Reduce paper costs
- Less accounting errors
- collect the invoice and due balances at customer site.
- Postage, courier and phone cost savings



Windows 10

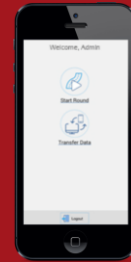
# AidCare System App

## Applications

- Aid Distribution Tracking.
- Surveying Application.

## Benefits

- Increase Distribution productivity
- Manage distributors daily activities
- Increase the quality of service
- Less operational errors and paper cost
- Monitor distribution process
- Extract correct reports.
- Tracking online and offline maps.
- Collect refugees information.



ANDROID



iOS

# ITAC Postal Solution

## ITAC Postal System

The system consists of a group of integrated sub-systems which are applied in post-offices and general administration.

## Sub-Systems

- Invoice Delivery & Collection system
- Postal Services & Cost Accounting
- Post Offices Management System
- Mail Delivery system (EMS)



Windows 10

A thick, solid purple diagonal stripe runs from the top-left corner towards the bottom-right corner, separating the white background on the left from the solid purple background on the right.

# Professional Services



## Professional Services

GAP analysis    Project Planning    Readiness Check  
Infrastructure Requirements Check HW and SW.

Starting the X.Y.Z. Methodology!

### Phase X

Data Validation and Cleansing. Installation.


### Phase Y

Core Functional Deployment.  
Training.

### Phase Z

Implementing Customization.  
GO LIVE.

1. Continues training.
2. Continues consultation and support.
3. Assuring system stability.
4. Monitoring system performance.
5. Managing compatibility.
6. Upgrading to the latest technologies.

A blurred background image of four business professionals in an office setting. A man in a dark suit and tie is pointing at a tablet held by a woman in a dark blazer. Another man in a dark suit is looking at the tablet. A woman with long dark hair is partially visible on the left. The scene is brightly lit, suggesting an indoor office environment.

Post Implementation -  
Warranty

1. Standardized maintenance contracts available around the world
2. Servicing and supporting wireless WAN, wireless LAN and RFID data collection technology with factory-trained techs using authorized procedures
3. Various depot or on-site maintenance SLAs with committed turnaround
4. Periodic on-site maintenance for batch or networked devices, including network “health check” option
5. Flexible technical support options available, including, 24x7, help desk and “Go Live”



Intermec Service Center





**Our Clients  
and Partners in  
Success**



Join the Success

## What Our Clients Say About Us

*“...Appreciate ITAC efficient, gracious customer service, the level of detail and accountability you demonstrated on the project...”*

### **Qais Shaker Al Jurf**

IT Director  
ALQAHTANI BEVERAGES -  
PEPSI

*“... We thank ITAC for the abnormal performance, hoping to keep this partnership developing towards more achievements...”*

### **Hanadi Haddad**

Procurement Department  
Fine Hygienic Holding Co  
LTD

*“...We would love to thank and appreciate the effort from ITAC to implement the ProVanMate system on a high level of credibility and professionalism...”*

### **Ramzi Nasir**

Operations Manager  
Delivery One



+962 6 5535205



[www.itacsoft.com](http://www.itacsoft.com)



[info@itacsoft.com](mailto:info@itacsoft.com)



[/ITAC2002](https://www.facebook.com/ITAC2002)



[/ITAC2002](https://www.twitter.com/ITAC2002)